



RIVERBEND SANDLER POOLS

HOW TO WINTERIZE YOUR FILL LINE HOSE





RIVERBEND SANDLER POOLS

HOW TO WINTERIZE YOUR HOSE BIBB

1

STEP 1

Locate pool fill line connection to hose bibb at house.

2

STEP 2

Disconnect white flex plumbing from "Y" valve at the hose bibb.

3

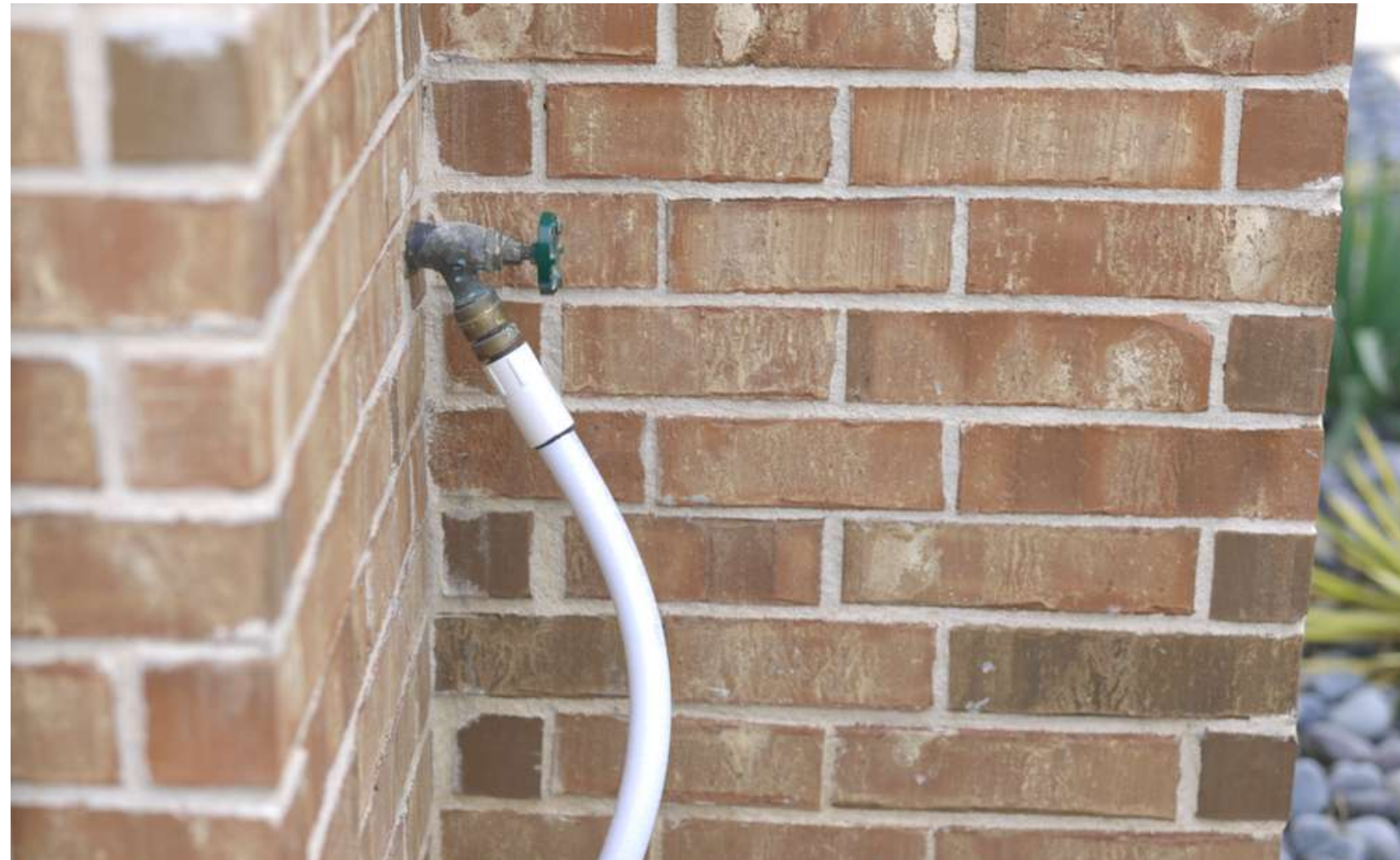
STEP 3

Cover hose bibb with insulation product.

*Please note that this step by step tutorial covers the majority of our equipment, but not all. Please adapt and if you still have issues submit an online winterizing service request.

STEP 1

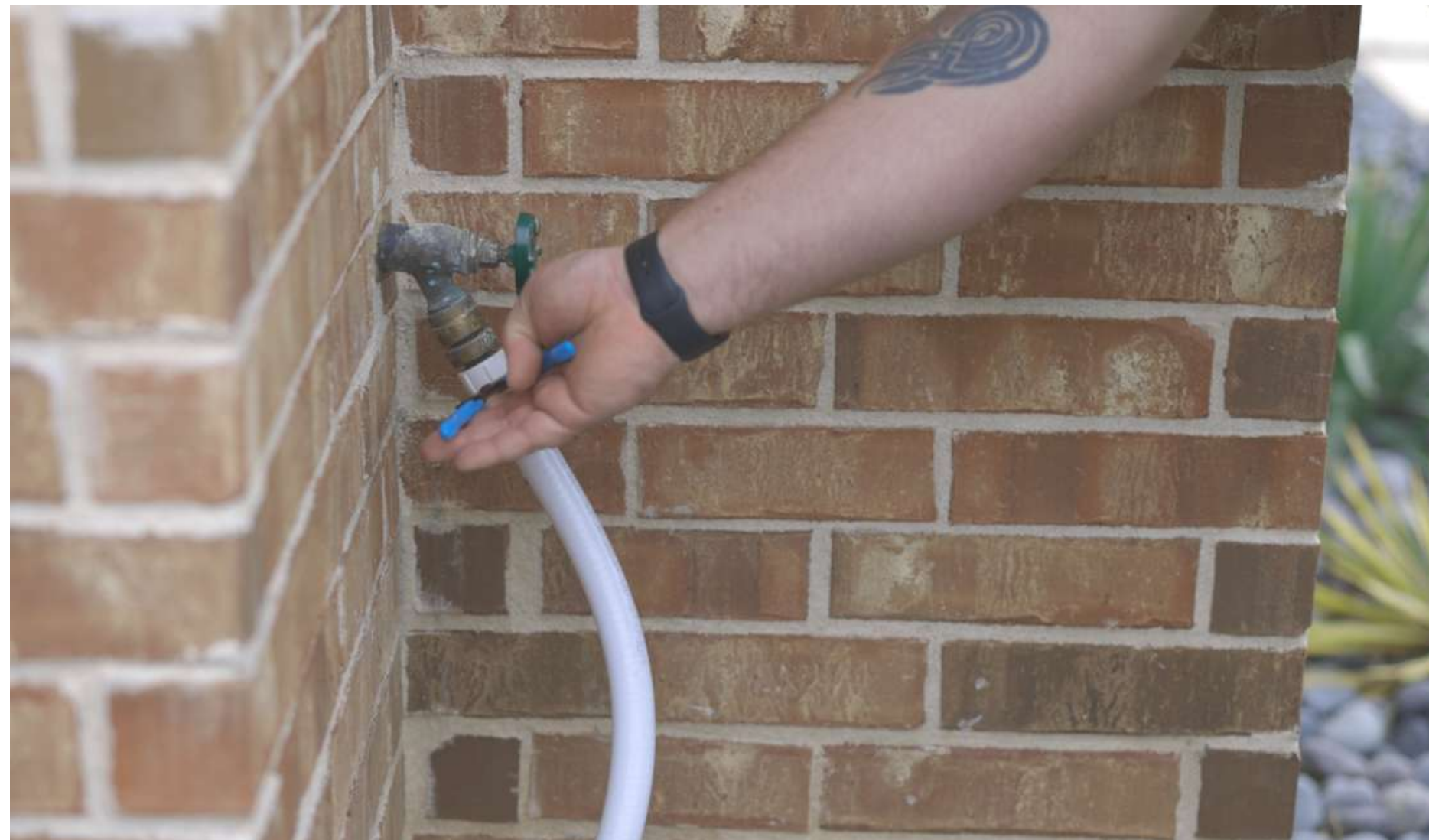
Locate pool fill line connection to hose bib at house.



STEP 2

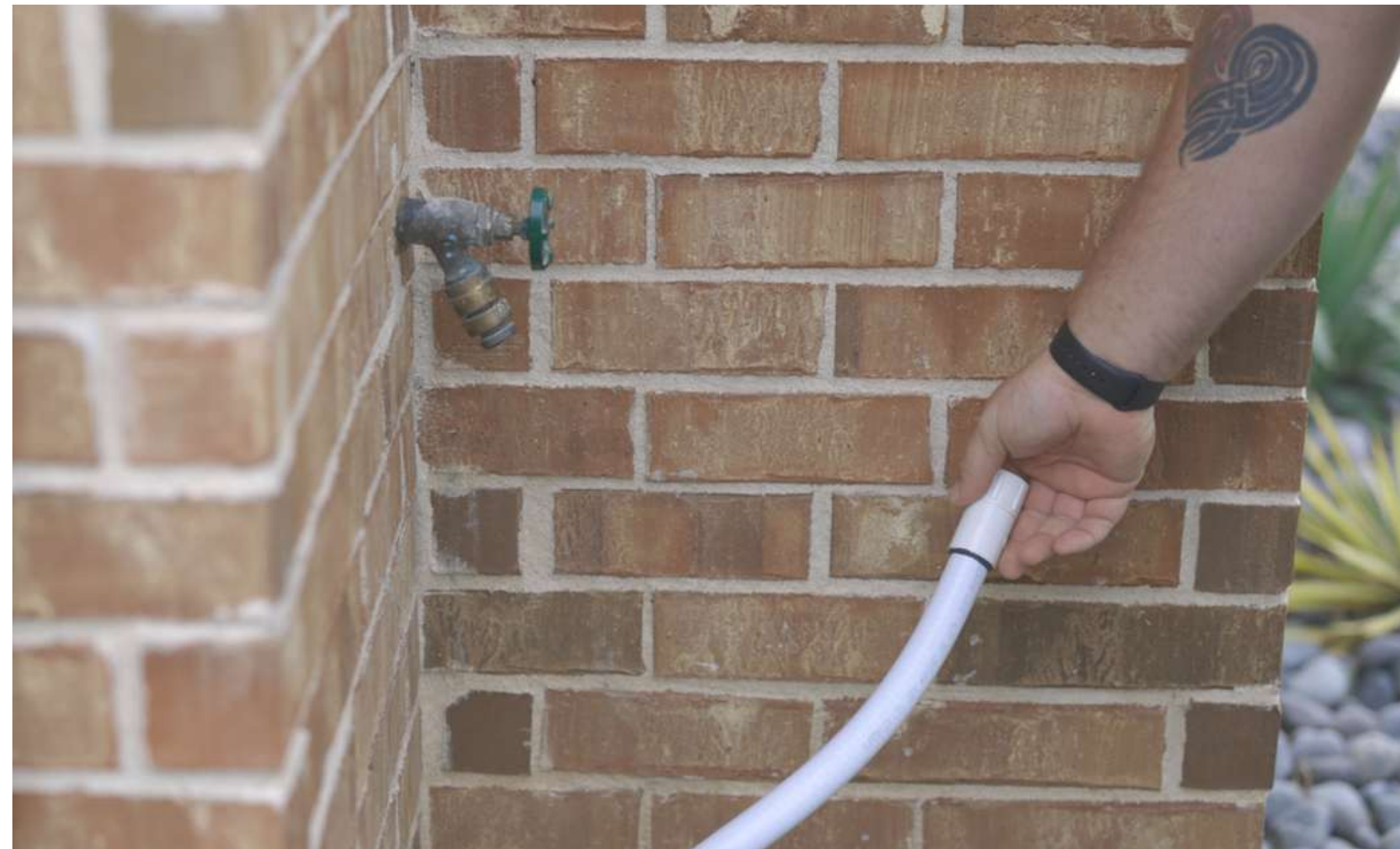
Using a pliers disconnect white flex plumbing from “Y” valve at the hose bibb.

Tools needed:
Pliers



STEP 3

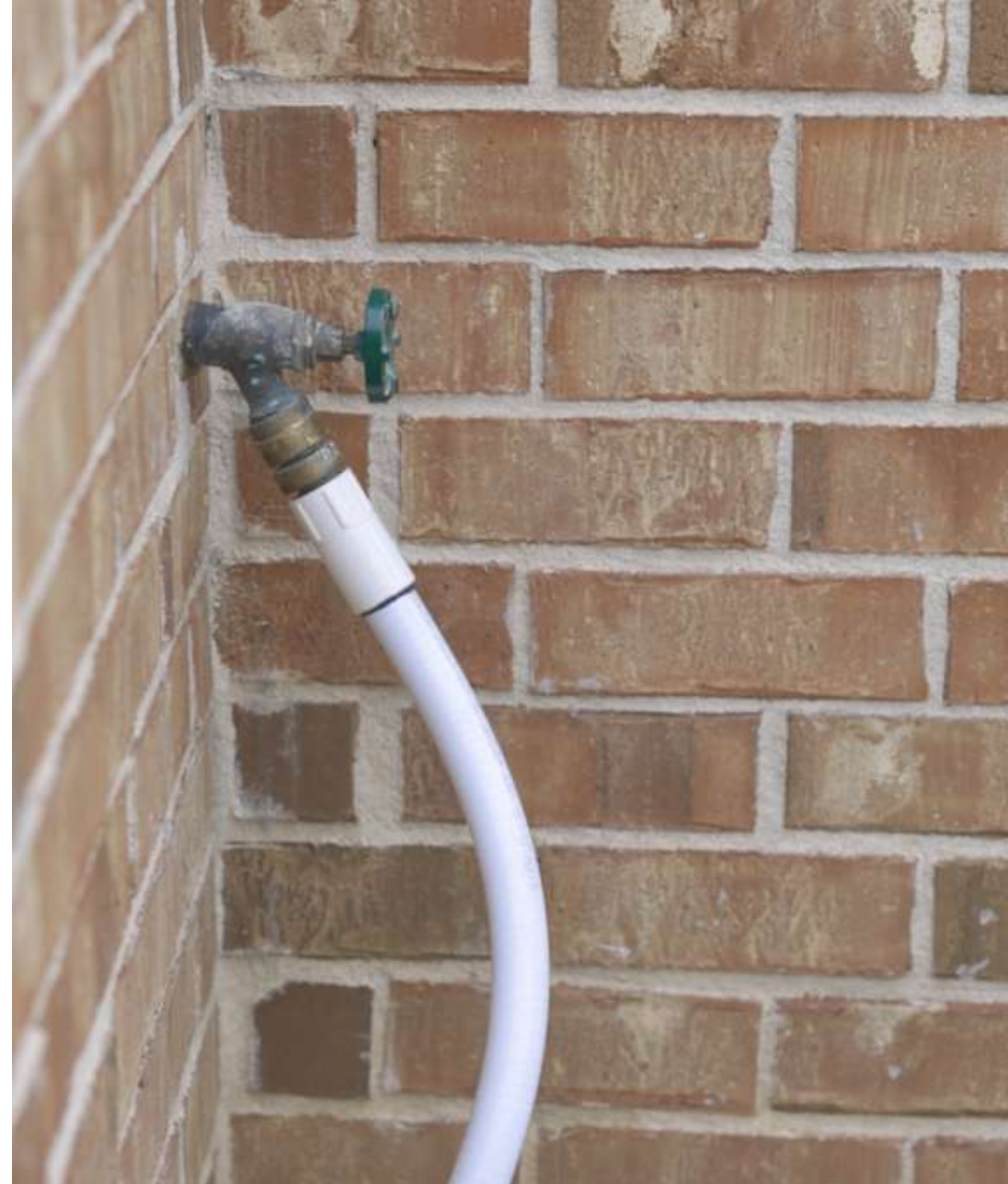
Cover hose bib with insulation product.





RIVERBEND SANDLER POOLS

RIVERBENDSANDLER.COM



WINTERIZING YOUR FILL LINE HOSE